

**Land Use Around Project Area**

Forestry  
 EVREC Green Energy Hub

- Project Area
- Corner Brook Pulp and Paper timber limits
- Domestic Harvest Area
- Silviculture

\*Data gathered from the Government of Newfoundland and Labrador - Department Fisheries, Forestry and Agriculture's Land Use Atlas.

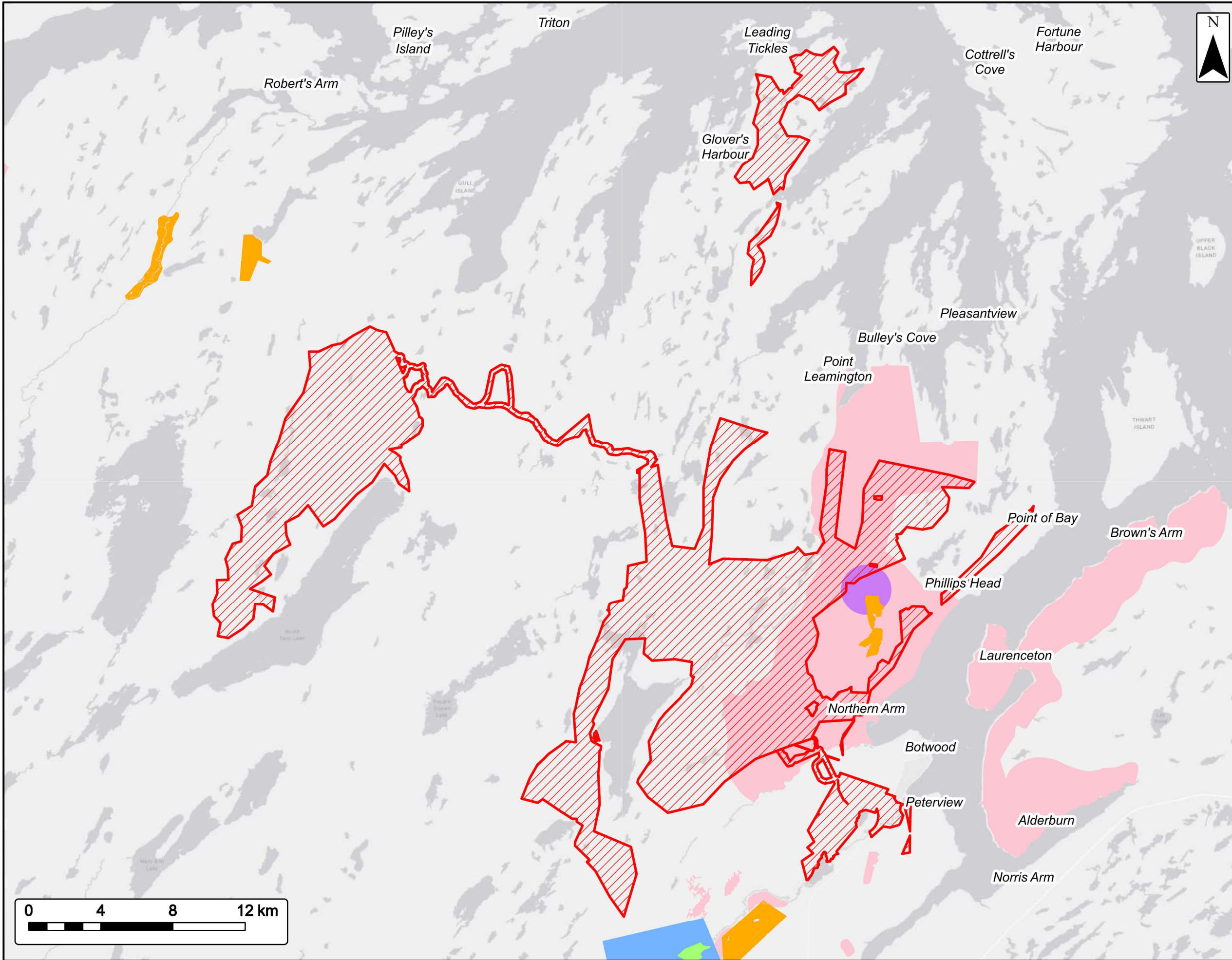


Coordinate System: NAD83 (CSRS) UTM Zone 21N Sources: Esri, HERE, Garmin, USGS, NRCan, NFLD Gov. Depts

Date: Sept. 2024	Project #: 24-10265
Scale: 1:200,000	Drawing #: <b>3.9</b>
Drawn By: B. Spencer	
Checked By: N. Thomas	







**Land Use Around Project Area**

Agriculture  
EVREC Green Energy Hub

- Project Area
- Agriculture
- AG - Crown Land
- Regional Pasture
- Commercial
- Agriculture Development Area
- Development Area

\*Data gathered from the Government of Newfoundland and Labrador - Department Fisheries, Forestry and Agriculture's Land Use Atlas.

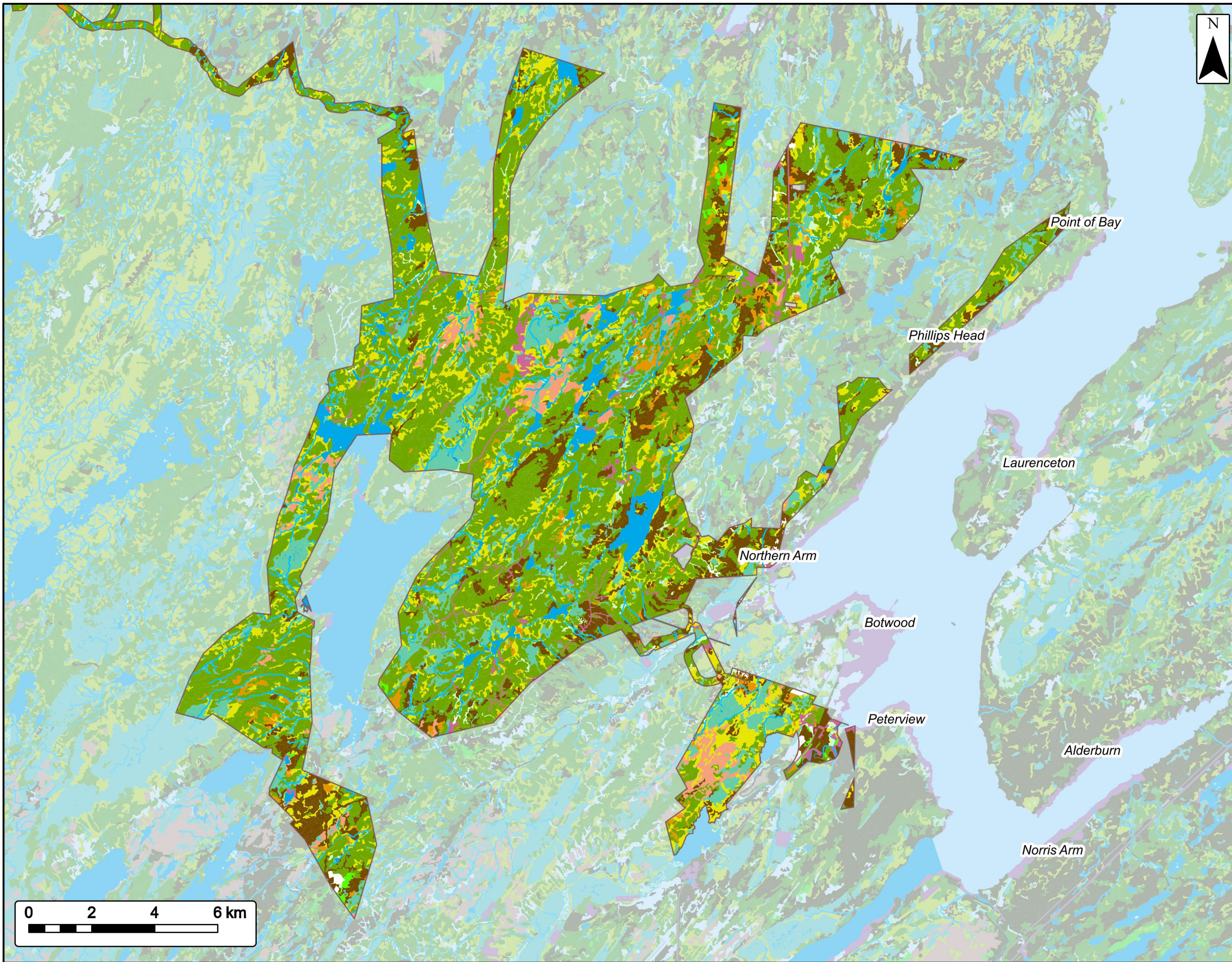


Coordinate System: NAD83 (CSRS) UTM Zone 21N Sources: Esri, HERE, Garmin, USGS, HRCan, NFLD Gov. Depts

Date: Sept. 2024	Project #: 24-10265
Scale: 1:204,400	<b>3.10</b>
Drawn By: B. Spencer	
Checked By: N. Thomas	







### Ecological Land Classification

*Botwood*

### EVREC Green Energy Hub

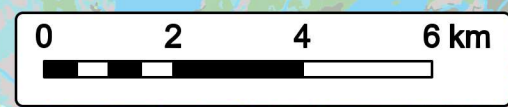
- Stream
- Softwood
- Coniferous Scrub
- Wetland
- Waterbody
- Mixed Forest
- Mixed Scrub
- Hardwoods
- Deciduous Scrub
- Regenerating Forest
- Barrens
- Anthropogenic

\*Data gathered from the NLFFA Land Cover database

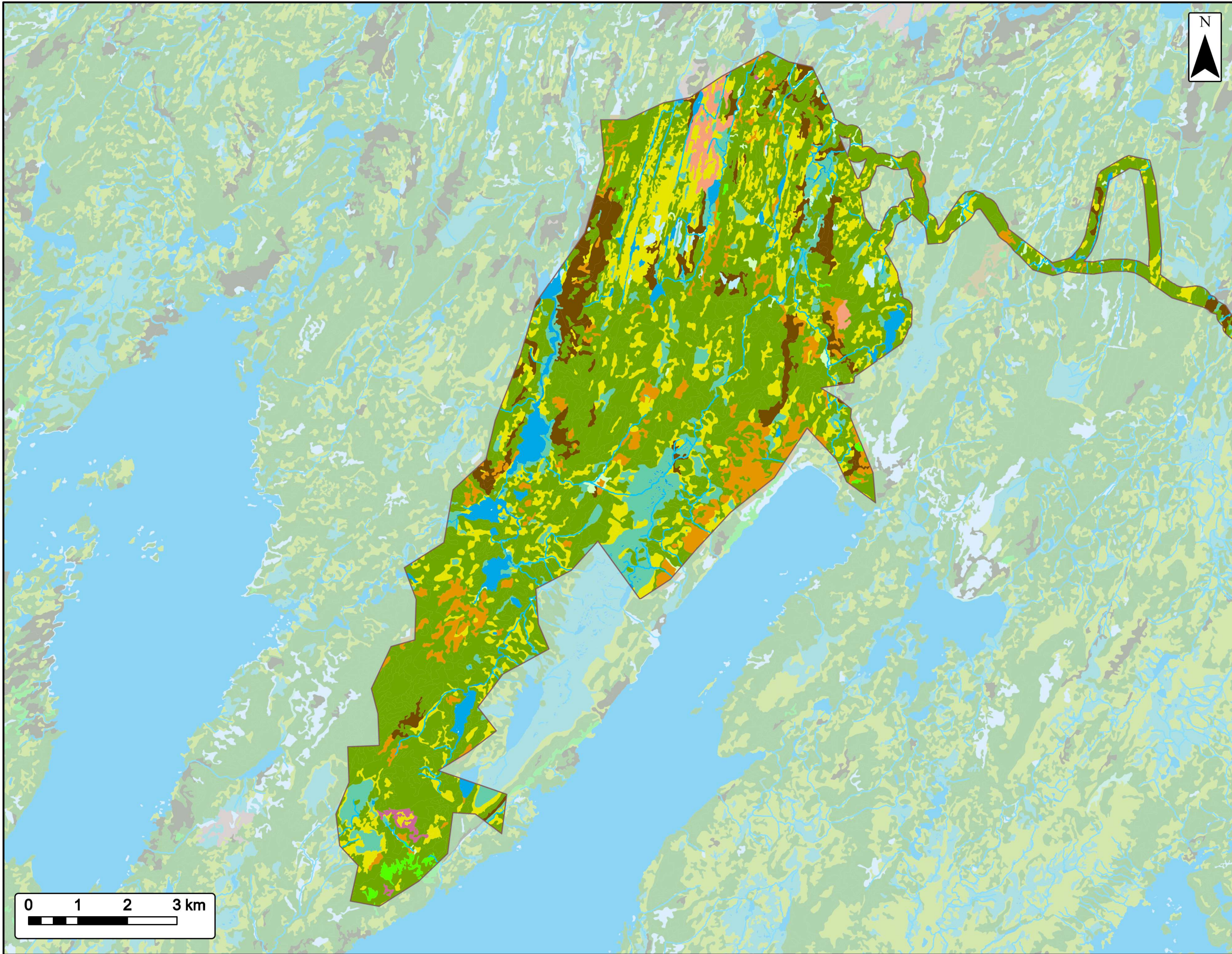


Coordinate System: NAD83 (CSRS) UTM Zone 21N  
Sources: ESRI Basemaps, GeoNOVA, NSTD, HERE, Garmin, USGS, NRCan, NFLD Gov. Depts

Date: Sept. 2024	Project #: 24-10265
Scale: 1:117,000	Drawing #: <b>3.11a</b>
Drawn By: B. Spencer	
Checked By: N. Thomas	







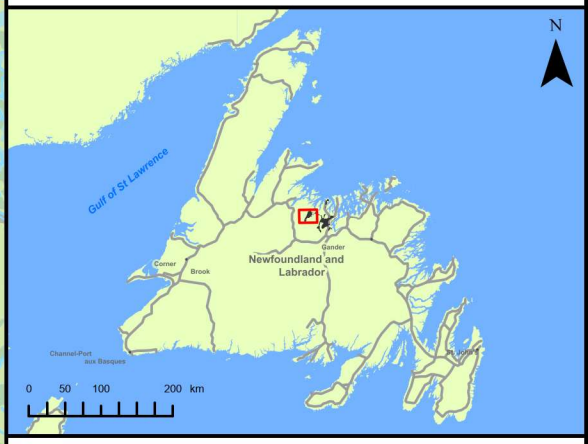
# Ecological Land Classification

*Twin Lakes*

## EVREC Green Energy Hub

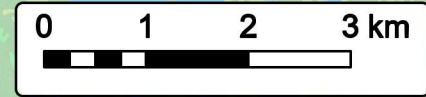
- Stream
- Softwood
- Coniferous Scrub
- Wetland
- Waterbody
- Mixed Forest
- Mixed Scrub
- Hardwoods
- Deciduous Scrub
- Regenerating Forest
- Barrens
- Anthropogenic

\*Data gathered from the NLFFA Land Cover database

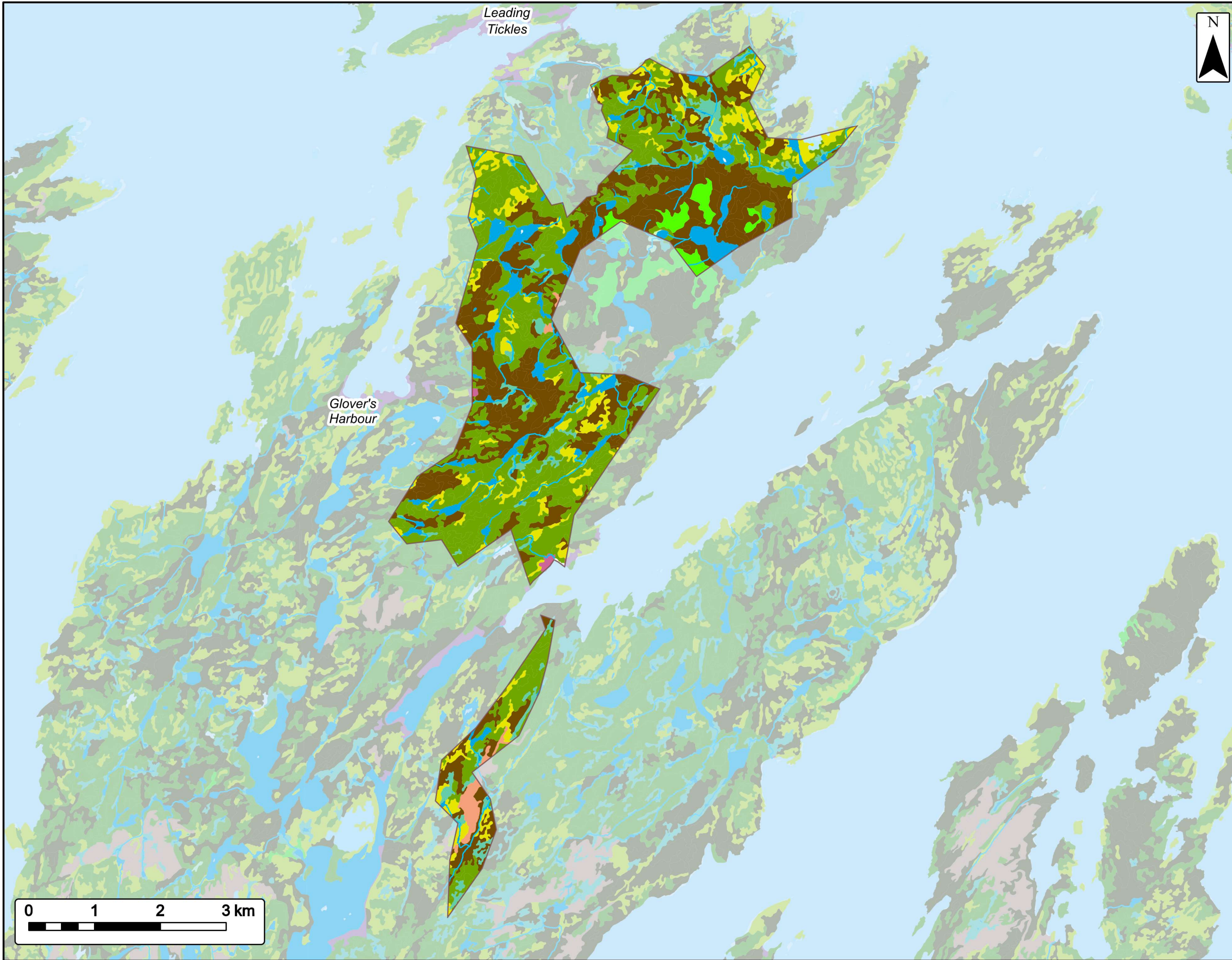


Coordinate System: NAD83 (CSRS) UTM Zone 21N Sources: ESRI Basemaps, GeoNOVA, NSTD, HERE, Garmin, USGS, NRCan, NFLD Gov. Depts

Date: <b>Sept. 2024</b>	Project #: <b>24-10265</b>
Scale: <b>1:74,000</b>	<b>3.11b</b>
Drawn By: <b>B. Spencer</b>	
Checked By: <b>N. Thomas</b>	







# Ecological Land Classification

*Leading Tickle*

## EVREC Green Energy Hub

Stream	
Softwood	
Coniferous Scrub	
Wetland	
Waterbody	
Mixed Forest	
Hardwoods	
Deciduous Scrub	
Regenerating Forest	
Barrens	
Anthropogenic	

\*Data gathered from the NLFFA Land Cover database

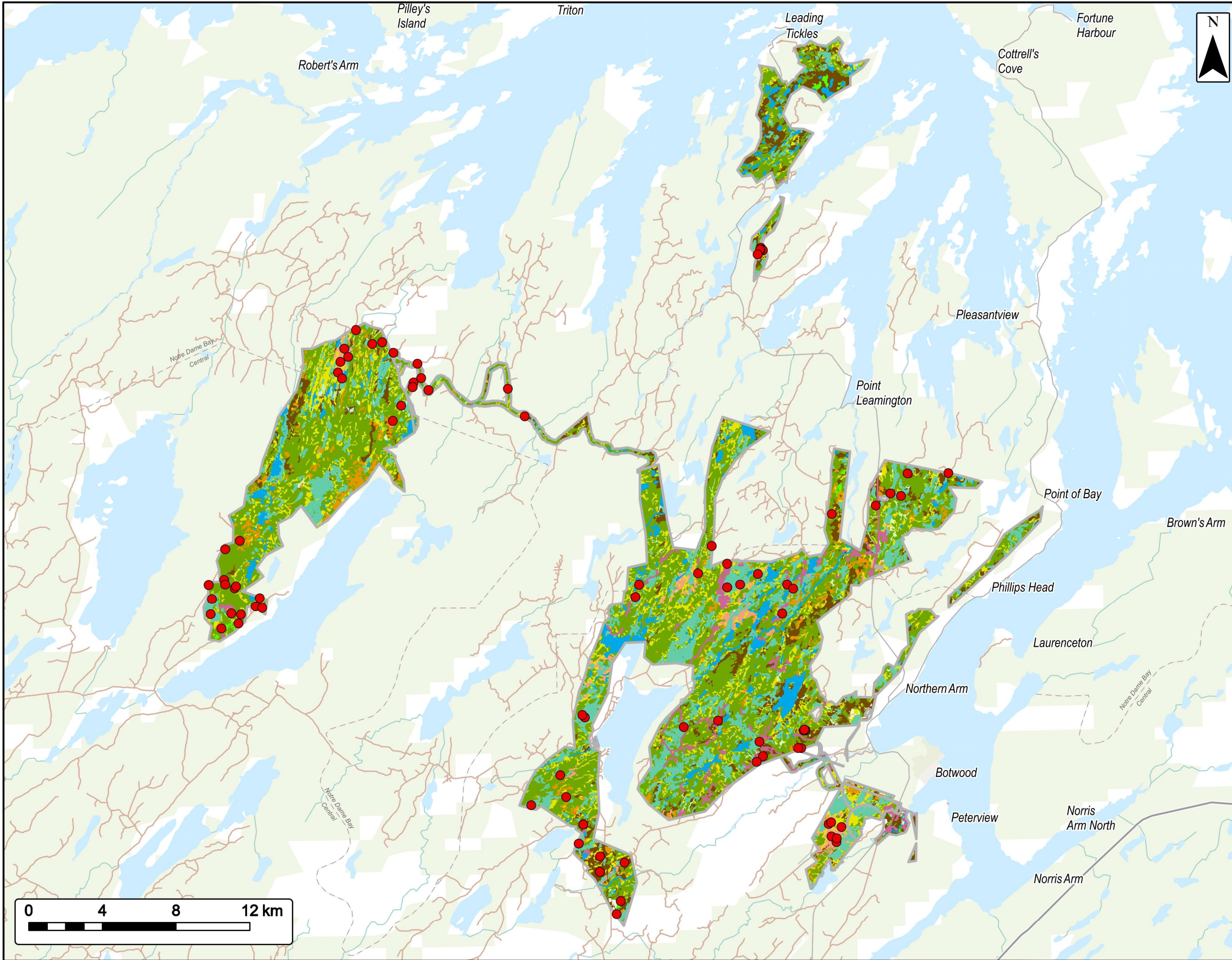


Coordinate System: NAD83 (CSRS) UTM Zone 21N  
Sources: ESRI Basemaps, GeoNOVA, NSTD, HERE, Garmin, USGS, NRCan, NFLD Gov. Depts

Date: Sept. 2024	Project #: 24-10265
Scale: 1:56,000	Drawing #: <b>3.11c</b>
Drawn By: B. Spencer	
Checked By: N. Thomas	





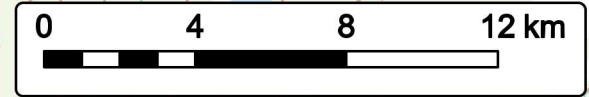


## Vegetation Surveys

Project Area

### EVREC Green Energy Hub

- Vegetation Surveys 2024 ●
- Streams —
- Resource Roads —
- Anthropogenic ■
- Barrens ■
- Mixed Scrub ■
- Wetlands ■
- Waterbody ■
- Regenerating ■
- Softwood ■
- Coniferous Scrub ■
- Deciduous Scrub ■
- Hardwoods ■
- Mixed Forest ■
- Project Area

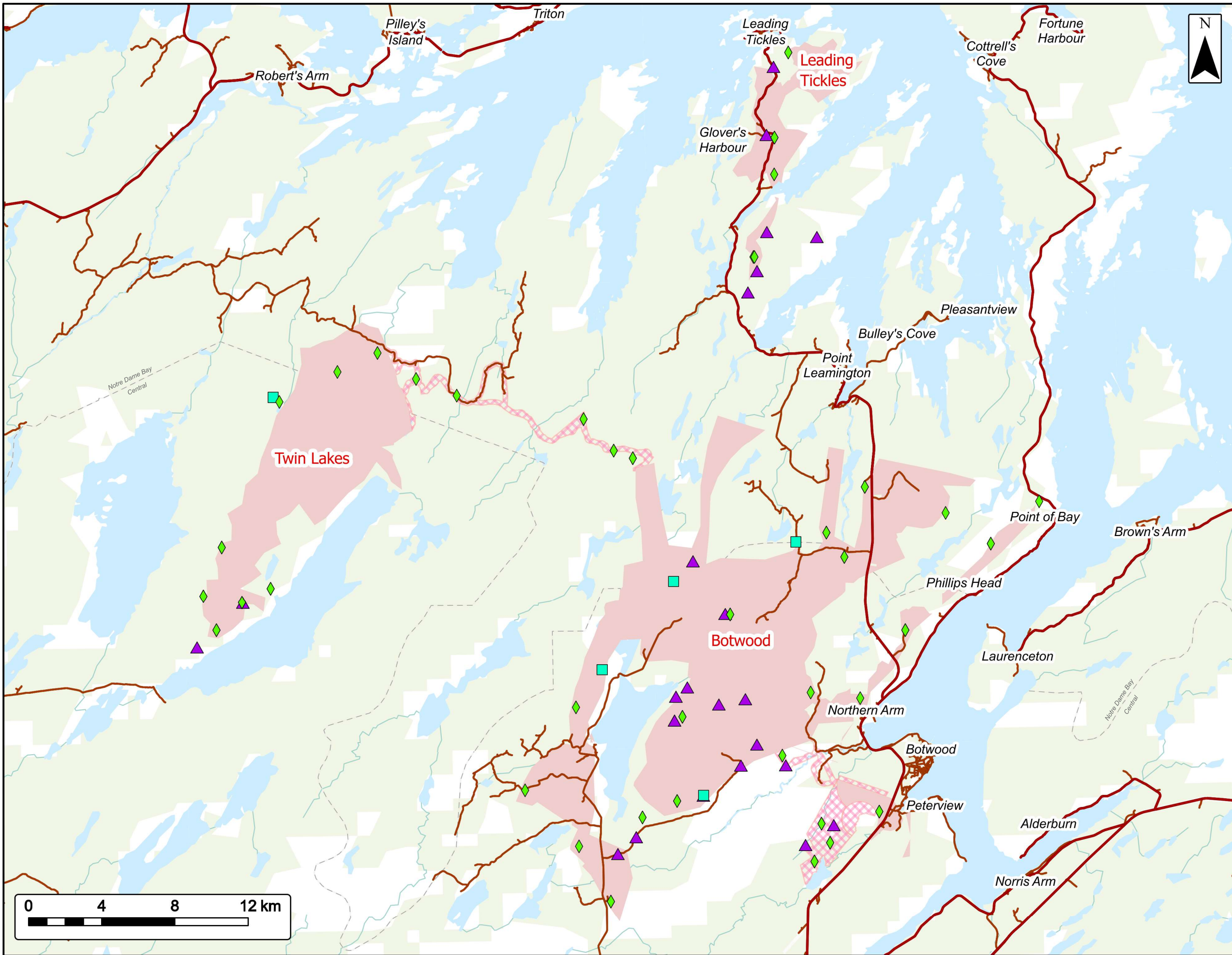


Coordinate System: NAD 1983 CSRS UTM Zone 21N Sources: ESRI Basemaps, GeoNOVA, NSTD, HERE, Garmin, USGS, NRCAN, NFLD Gov. Depts

Date: August 2024	Project #: 24-10265
Scale: 1:200,000	<h1>3.12</h1>
Drawn By: M. Trotman	
Checked By: N. Thomas	







## Preliminary Study Sites

Project Area

---

### EVREC Green Energy Hub

---

Acoustic Recording Device (Bats)	◆
Avian Radar	■
Trail Camera	▲
Primary Roads	—
Secondary Roads	—
EVREC Wind Energy Reserve Area	■
Application for Crown Title (Ongoing)	■

---

---

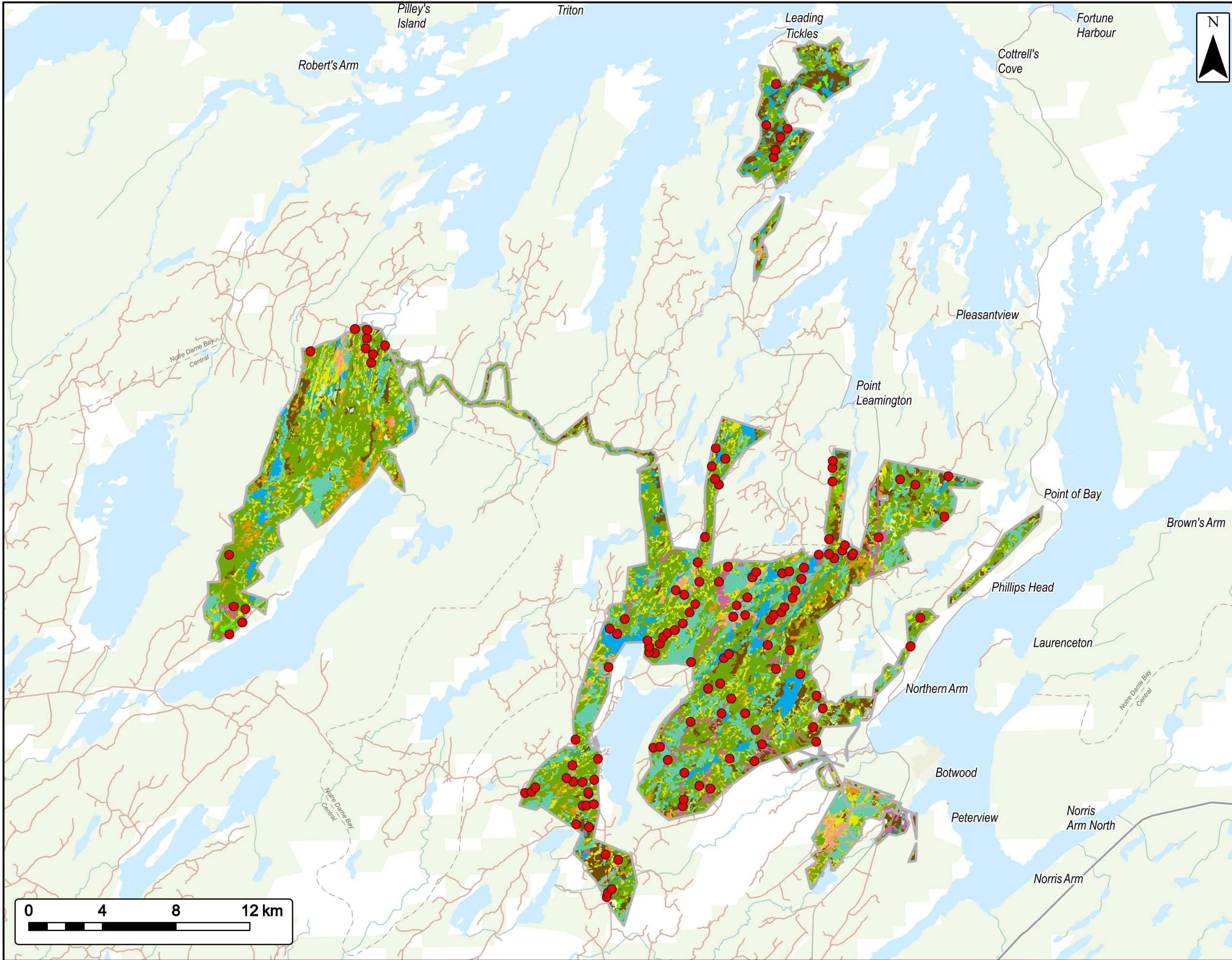
---

Coordinate System: NAD83 (CSRS) UTM Zone 21H  
Sources: Esri Canada, Esri, TomTom, Garmin, SafeGraph, METI/NASA, USGS, NRCAN, Parks Canada, NFLD Gov. Depts

Date: <b>Sept. 2024</b>	Project #: <b>24-10265</b>
Scale: <b>1:200,000</b>	<b>3.13</b>
Drawn By: <b>B. Spencer</b>	
Checked By: <b>N. Thomas</b>	

---

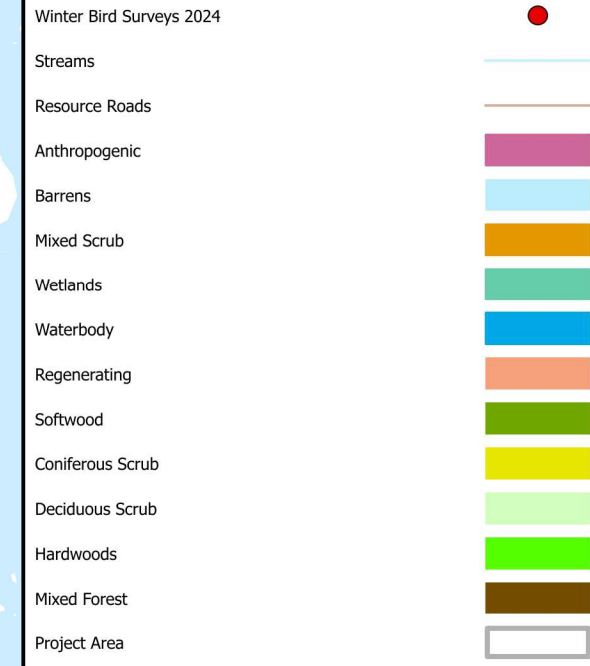




# Winter Bird Surveys

Project Area

## EVREC Green Energy Hub

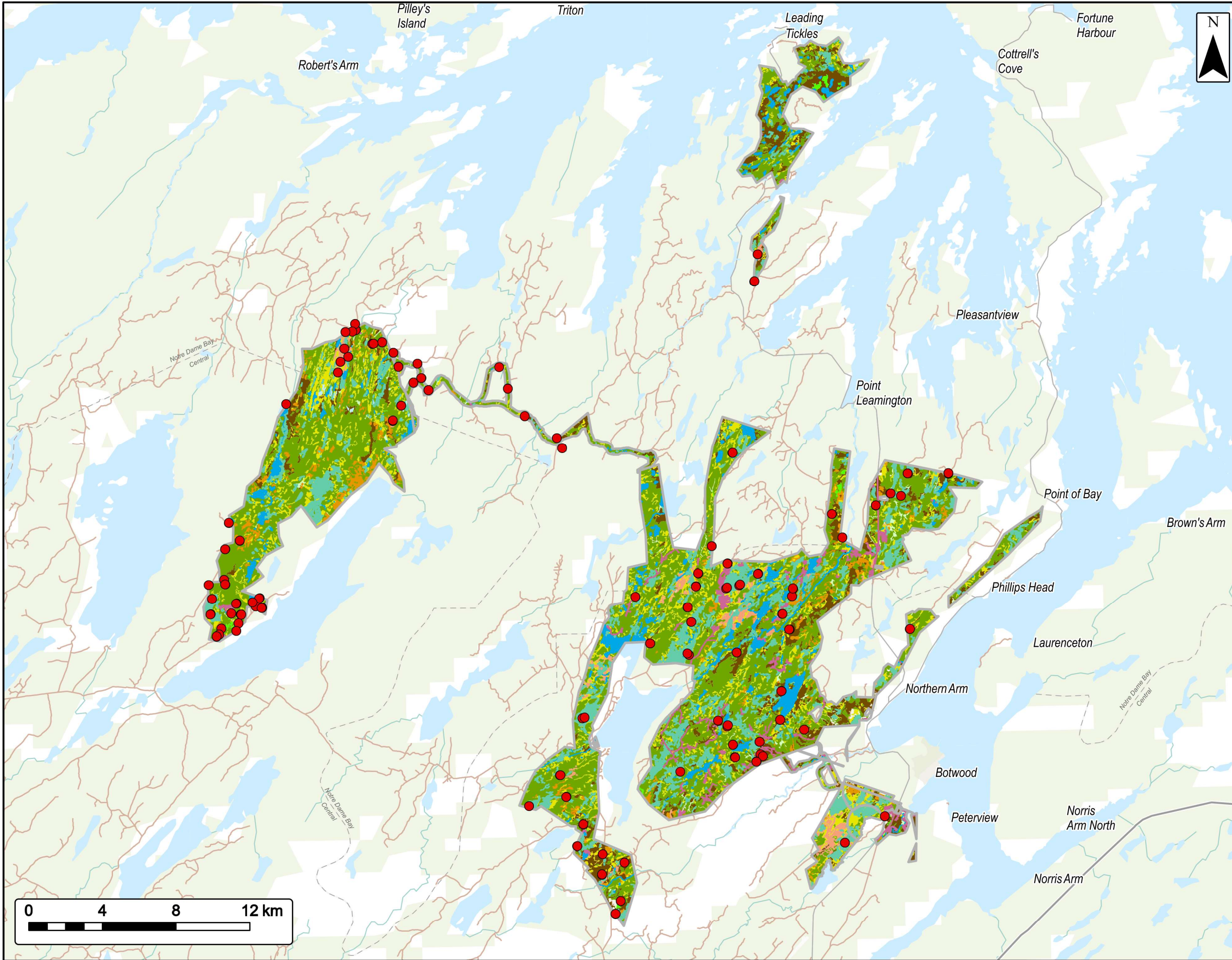


Coordinate System: NAD 1983 CSRS UTM Zone 21N Sources: ESRI Basemaps, GeoNOVA, NSTD, HERE, Garmin, USGS, NRCAN, NFLD Gov. Depts

Date:	August 2024	Project #:	24-10265
Scale:	1:200,000	Drawing #:	<b>3.14</b>
Drawn By:	M. Trotman		
Checked By:	N. Thomas		







# Breeding Bird Surveys

Project Area

## EVREC Green Energy Hub

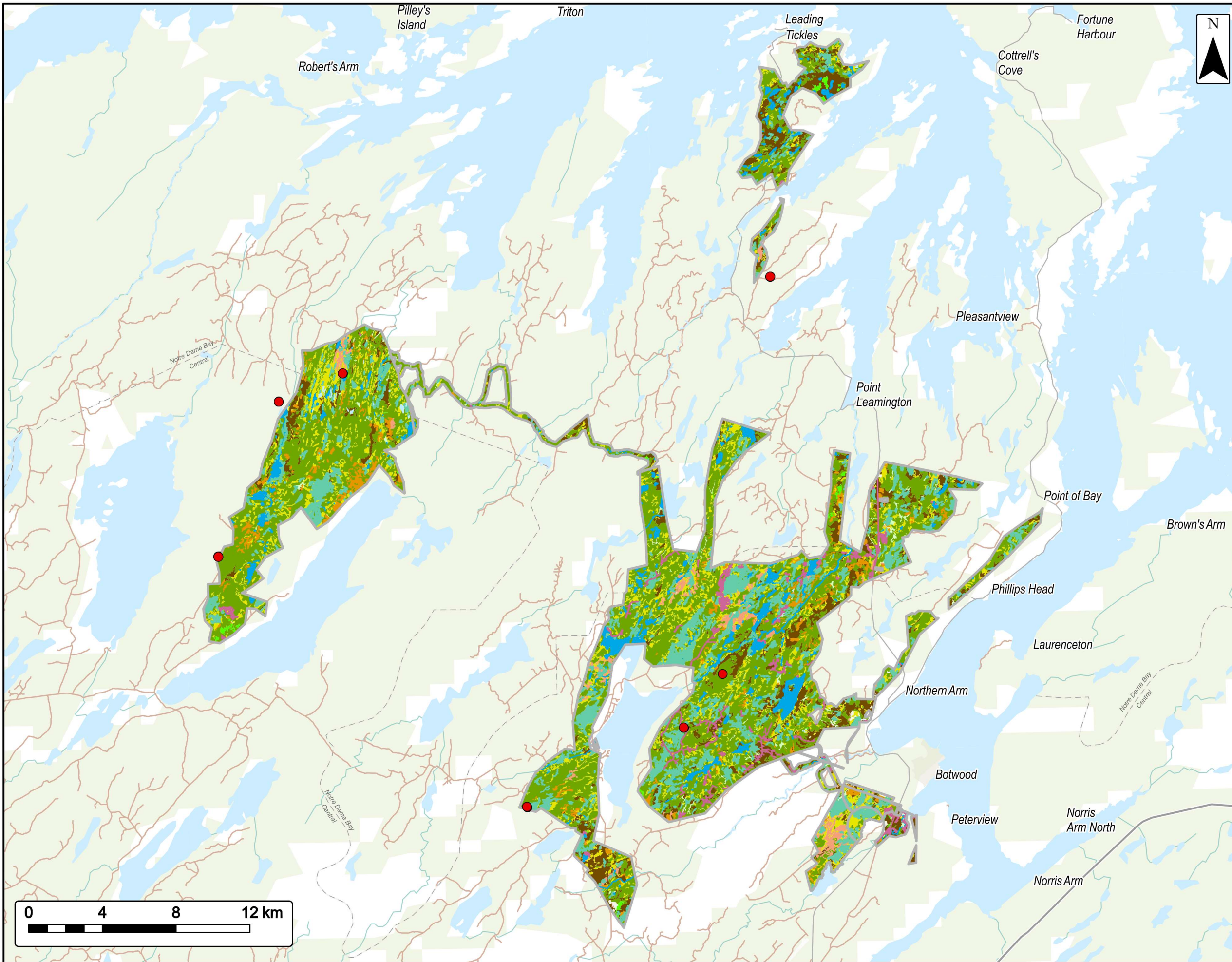


Coordinate System: NAD 1983 CSRS UTM Zone 21N Sources: ESRI Basemaps, GeoNOVA, NSTD, HERE, Garmin, USGS, NRCAN, NFLD Gov. Depts

Date:	August 2024	Project #:	24-10265
Scale:	1:200,000	Drawing #:	<b>3.15</b>
Drawn By:	M. Trotman		
Checked By:	N. Thomas		



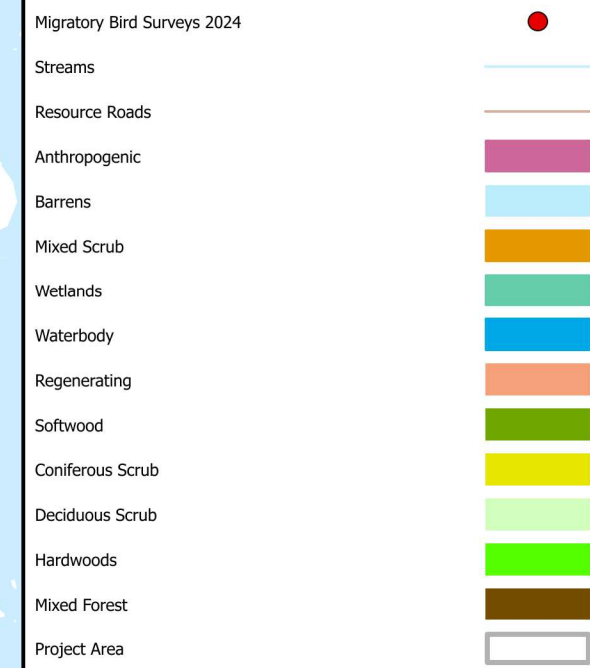




# Migratory Bird Surveys

Project Area

## EVREC Green Energy Hub

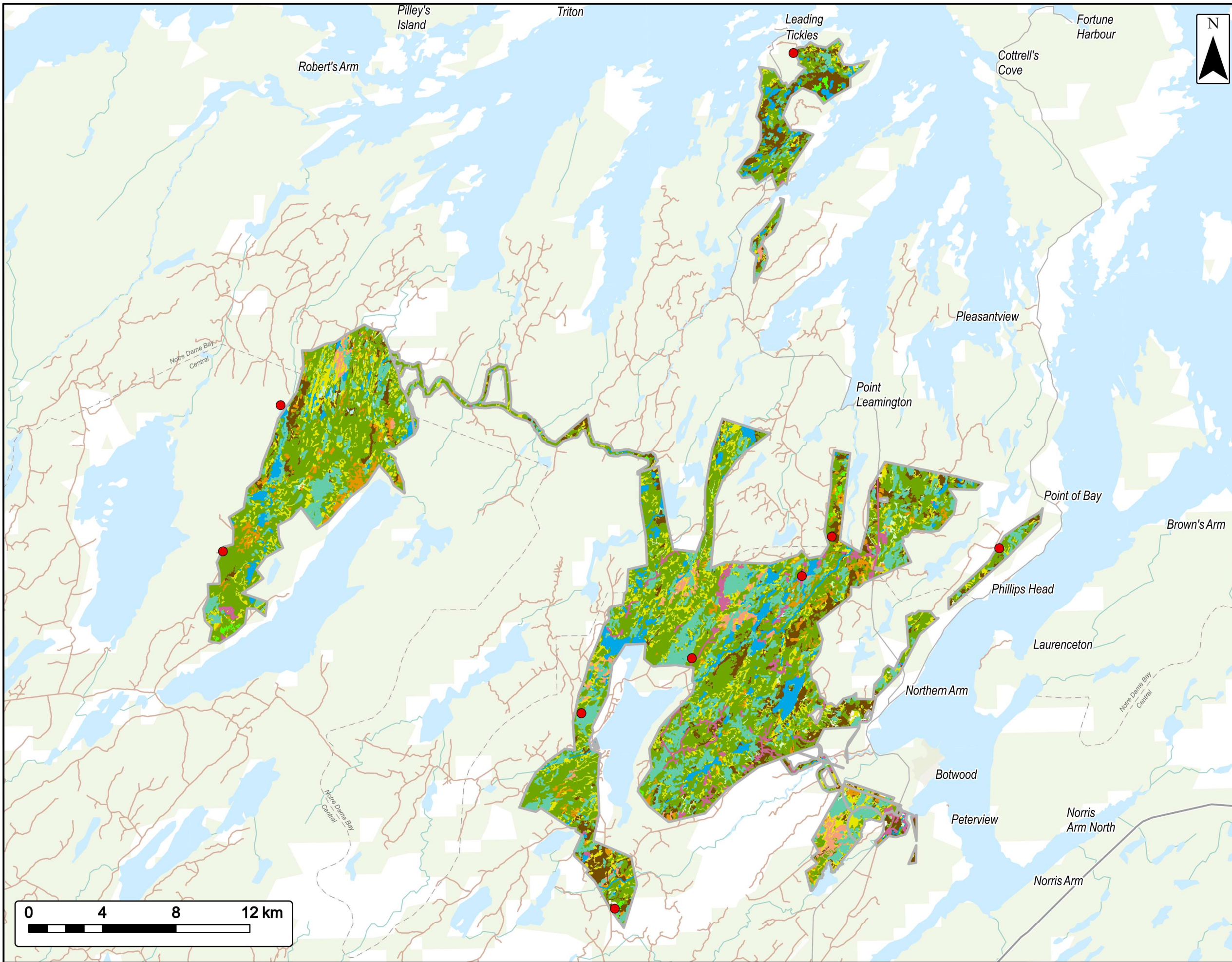


Coordinate System: NAD 1983 CSRS UTM Zone 21N Sources: ESRI Basemaps, GeoNOVA, NSTD, HERE, Garmin, USGS, NRCAN, NFLD Gov. Depts

Date:	August 2024	Project #:	24-10265
Scale:	1:200,000	Drawing #:	<b>3.16</b>
Drawn By:	M. Trotman		
Checked By:	N. Thomas		







**Acoustic Recording Units: Birds**  
Project Area

EVREC Green Energy Hub

Acoustic Recording Units (Birds) ●

Streams —

Resource Roads —

Anthropogenic ■

Barrens ■

Mixed Scrub ■

Wetlands ■

Waterbody ■

Regenerating ■

Softwood ■

Coniferous Scrub ■

Deciduous Scrub ■

Hardwoods ■

Mixed Forest ■

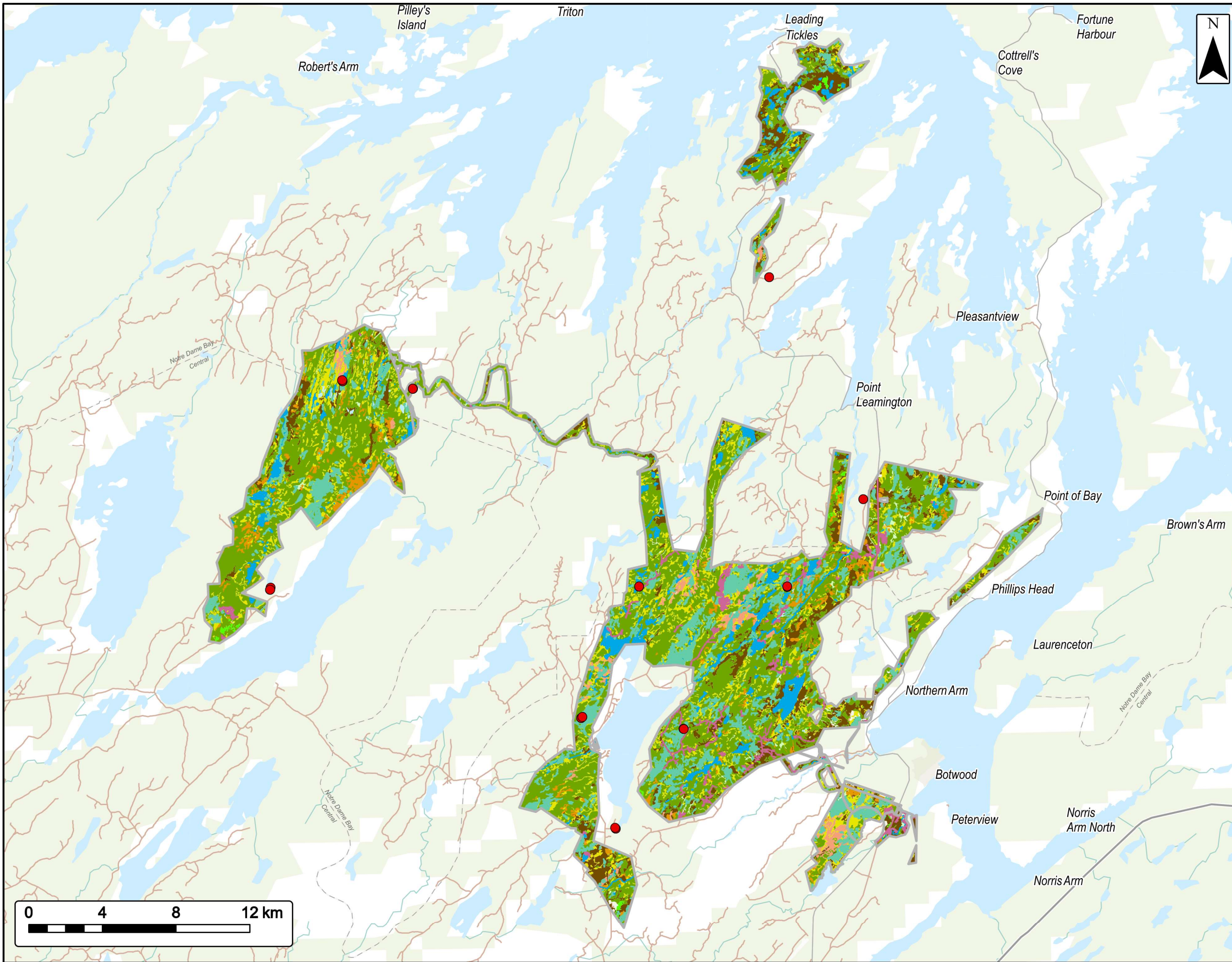
Project Area □

Coordinate System: NAD 1983 CSRS UTM Zone 21N  
Sources: ESRI Basemaps, GeoNOVA, NSTD, HERE, Garmin, USGS, NRCAN, NFLD Gov. Depts

Date:	August 2024	Project #:	24-10265
Scale:	1:200,000	Drawing #:	<b>3.17</b>
Drawn By:	M. Trotman		
Checked By:	N. Thomas		

**strum**  
CONSULTING

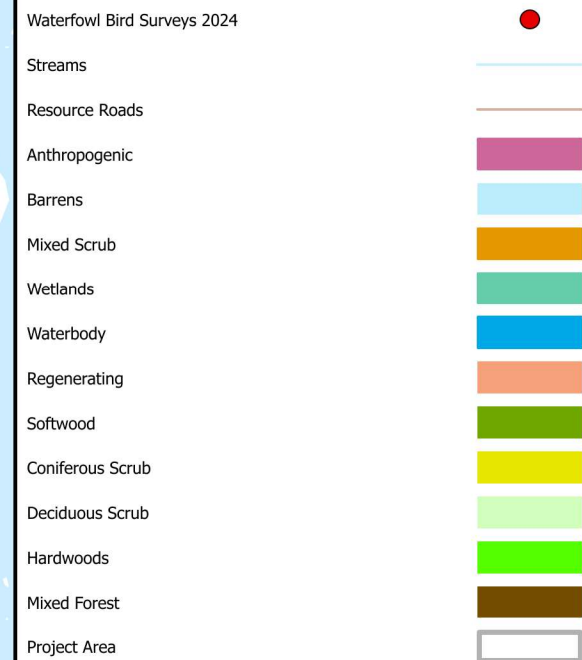




# Waterfowl Surveys

Project Area

## EVREC Green Energy Hub

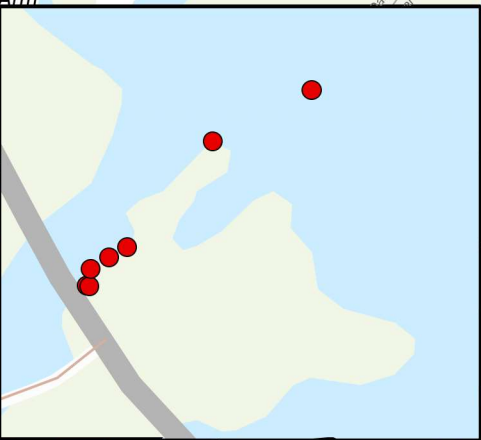
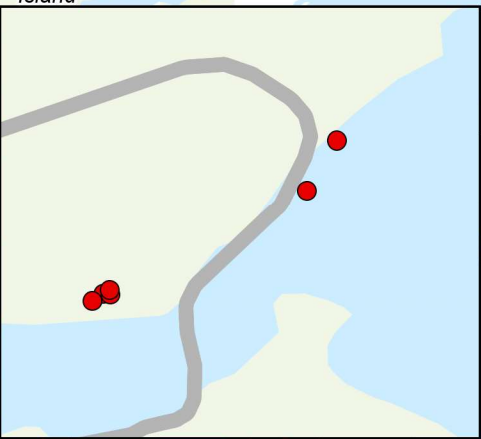
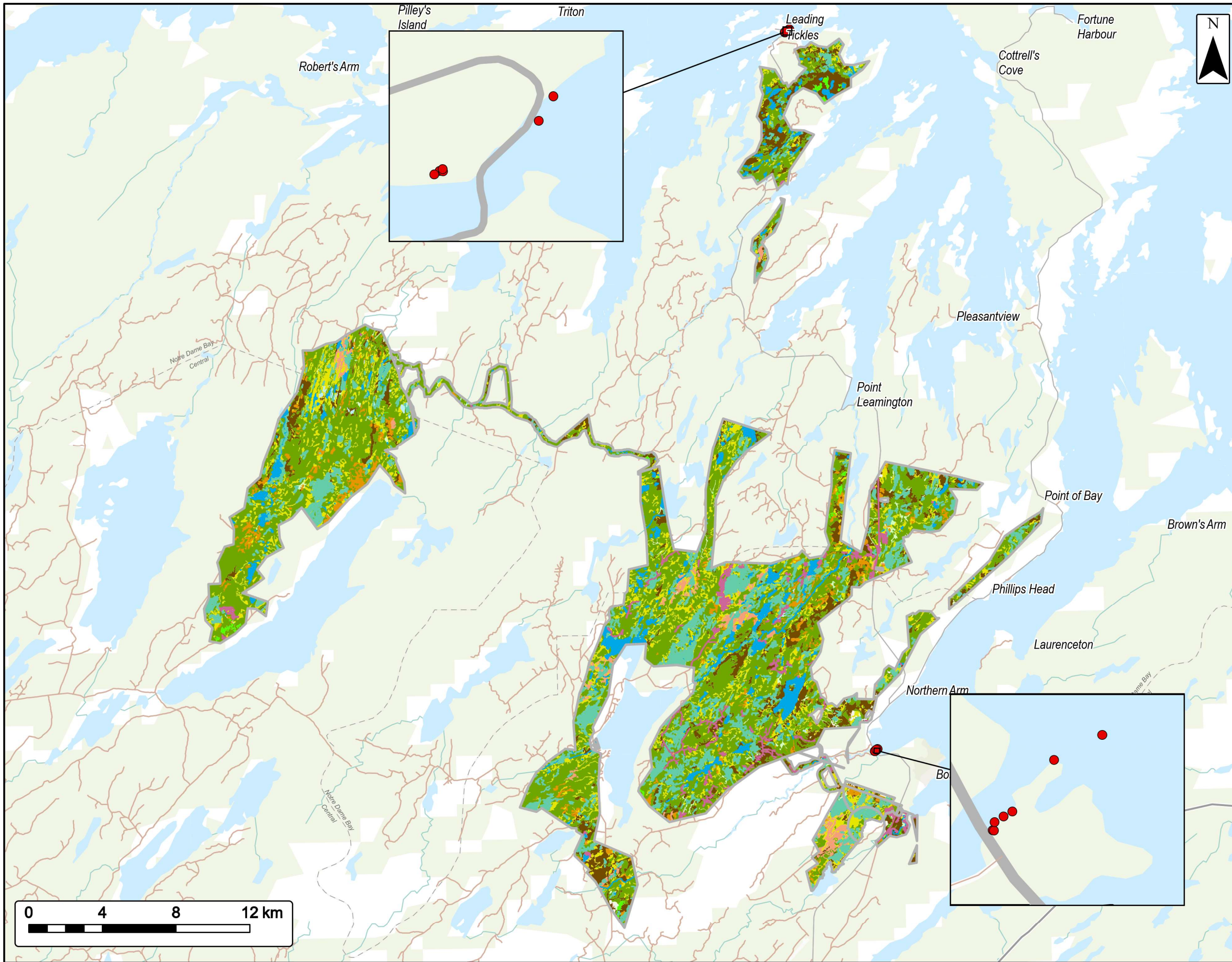


Coordinate System: NAD 1983 CSRS UTM Zone 21N Sources: ESRI Basemaps, GeoNOVA, NSTD, HERE, Garmin, USGS, NRCAN, NFLD Gov. Depts

Date:	August 2024	Project #:	24-10265
Scale:	1:200,000	Drawing #:	<b>3.18</b>
Drawn By:	M. Trotman		
Checked By:	N. Thomas		







## Shorebird Surveys

Project Area

### EVREC Green Energy Hub

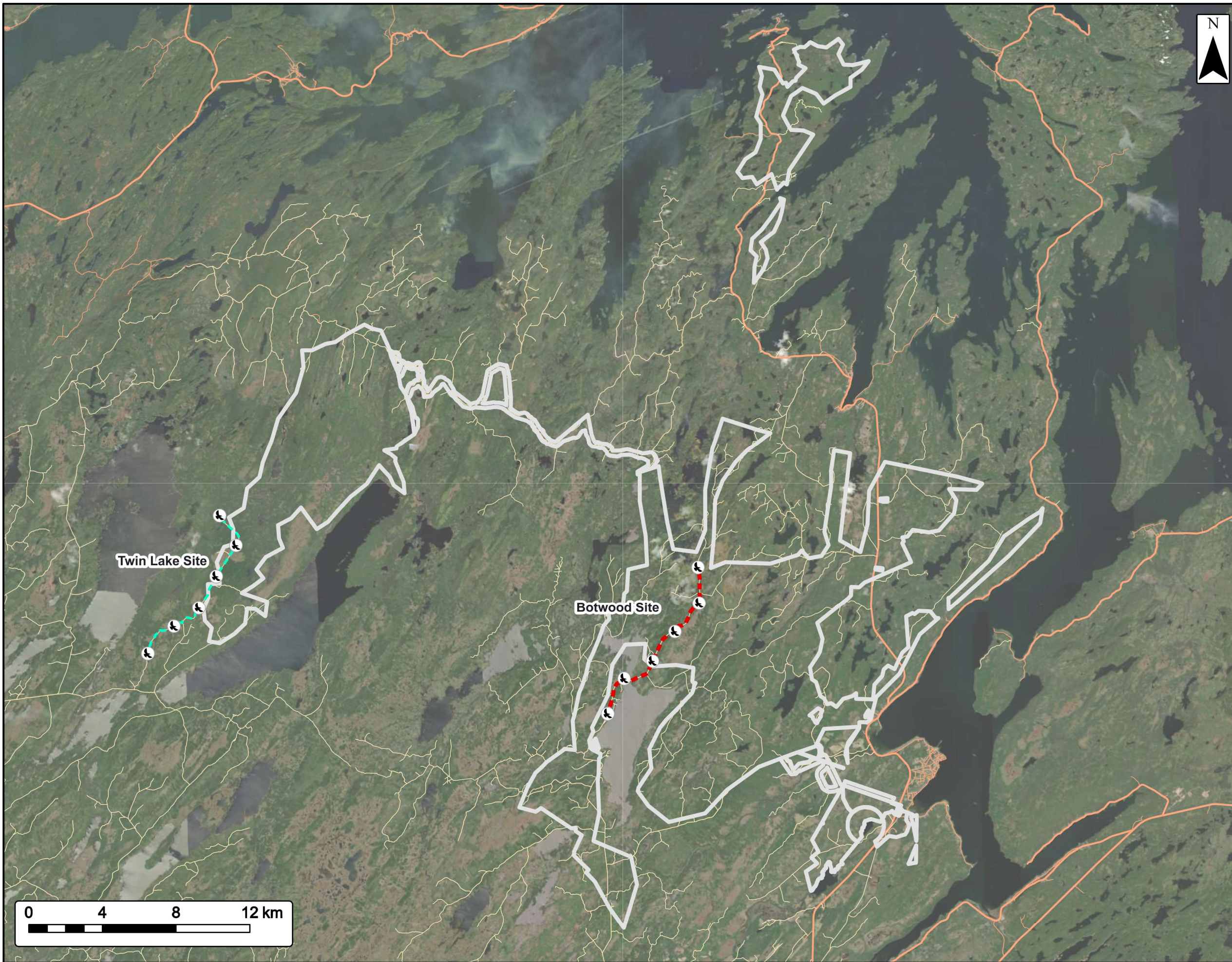


Coordinate System: NAD 1983 CSRS UTM Zone 21N Sources: ESRI Basemaps, GeoNOVA, NSTD, HERE, Garmin, USGS, NRCAN, NFLD Gov. Depts

Date:	August 2024	Project #:	24-10265
Scale:	1:200,000	Drawing #:	<b>3.19</b>
Drawn By:	M. Trotman		
Checked By:	N. Thomas		





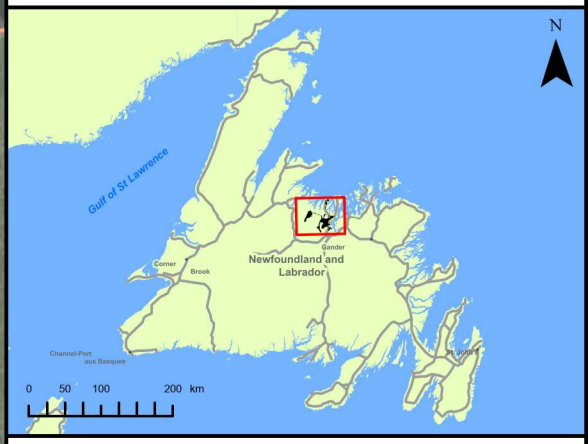


# Nocturnal Owl Surveys

Project Area

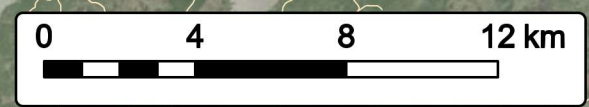
## EVREC Green Energy Hub

- Nocturnal Owl Surveys
- Botwood - Transect Line
- Twin Lakes - Transect Line
- Resource Roads
- Secondary Roads
- Primary Roads
- Project Area

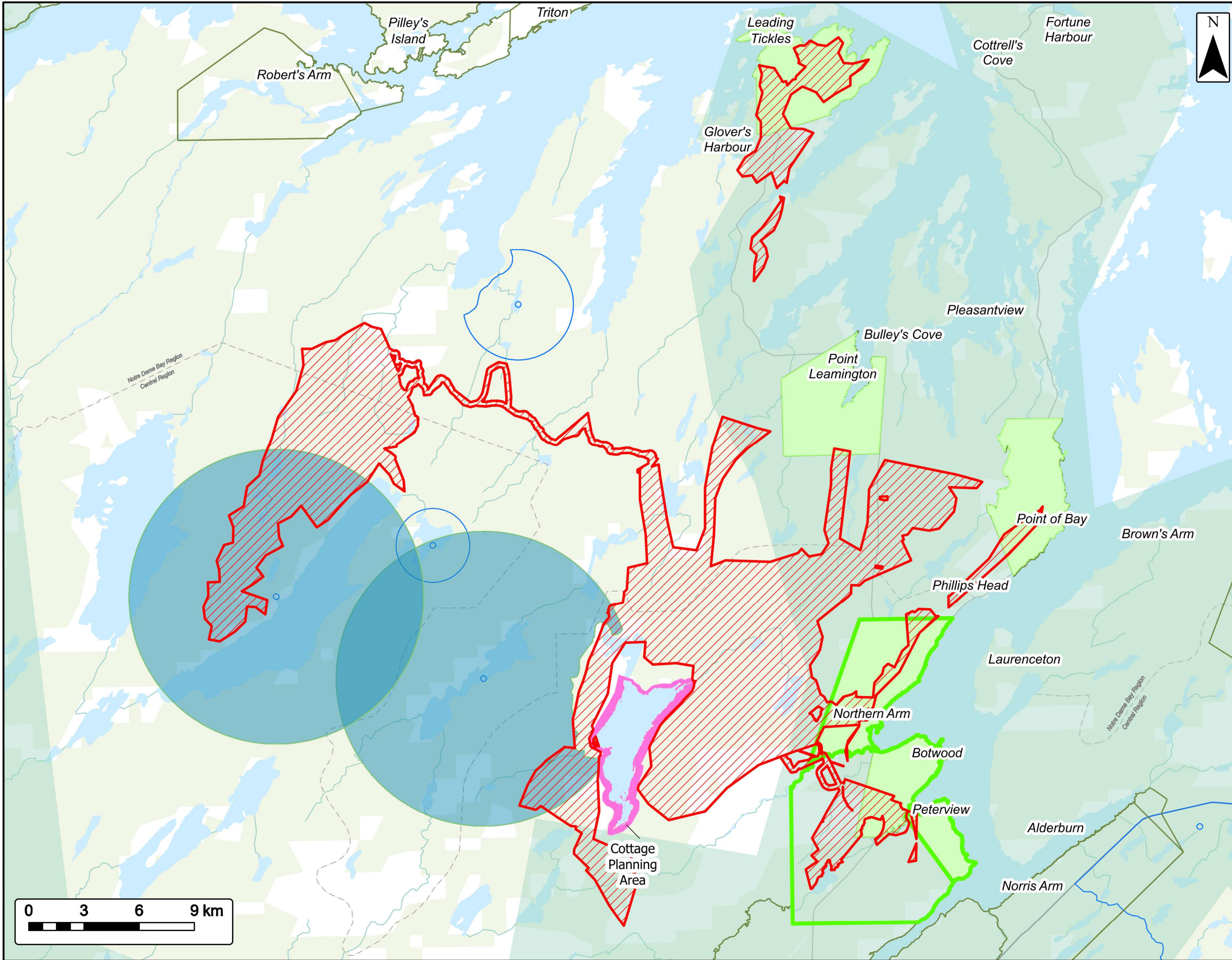


Coordinate System: NAD 1983 CSRS UTM Zone 21N Sources: ESRI Basemaps, GeoNOVA, NSTD, HERE, Garmin, USGS, NRCan, NFLD Gov. Depts

Date: August 2024	Project #: 24-10265
Scale: 1:200,000	Drawing #:
Drawn By: M. Trotman	<b>3.20</b>
Checked By: N. Thomas	







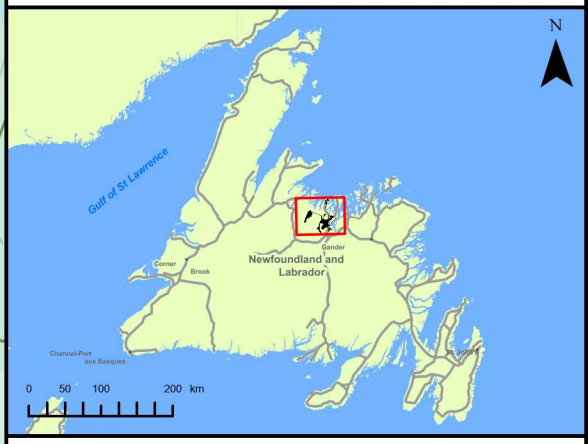
**Land Use around Project Area**

Human Use

**EVREC Green Energy Hub**

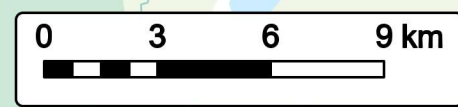
- Project Area
- Designated Cottage Country adjacent to project area
- Outfitting buffers that intersect project area
- Municipal Boundary that intersect the project area
- Municipal Planning Area that intersect the project area
- Municipal boundaries external to the project area
- Outfitter buffers external to project area
- Hydro and Power distribution area

\*Data gathered from the Government of Newfoundland and Labrador - Department Fisheries, Forestry and Agriculture's Land Use Atlas.

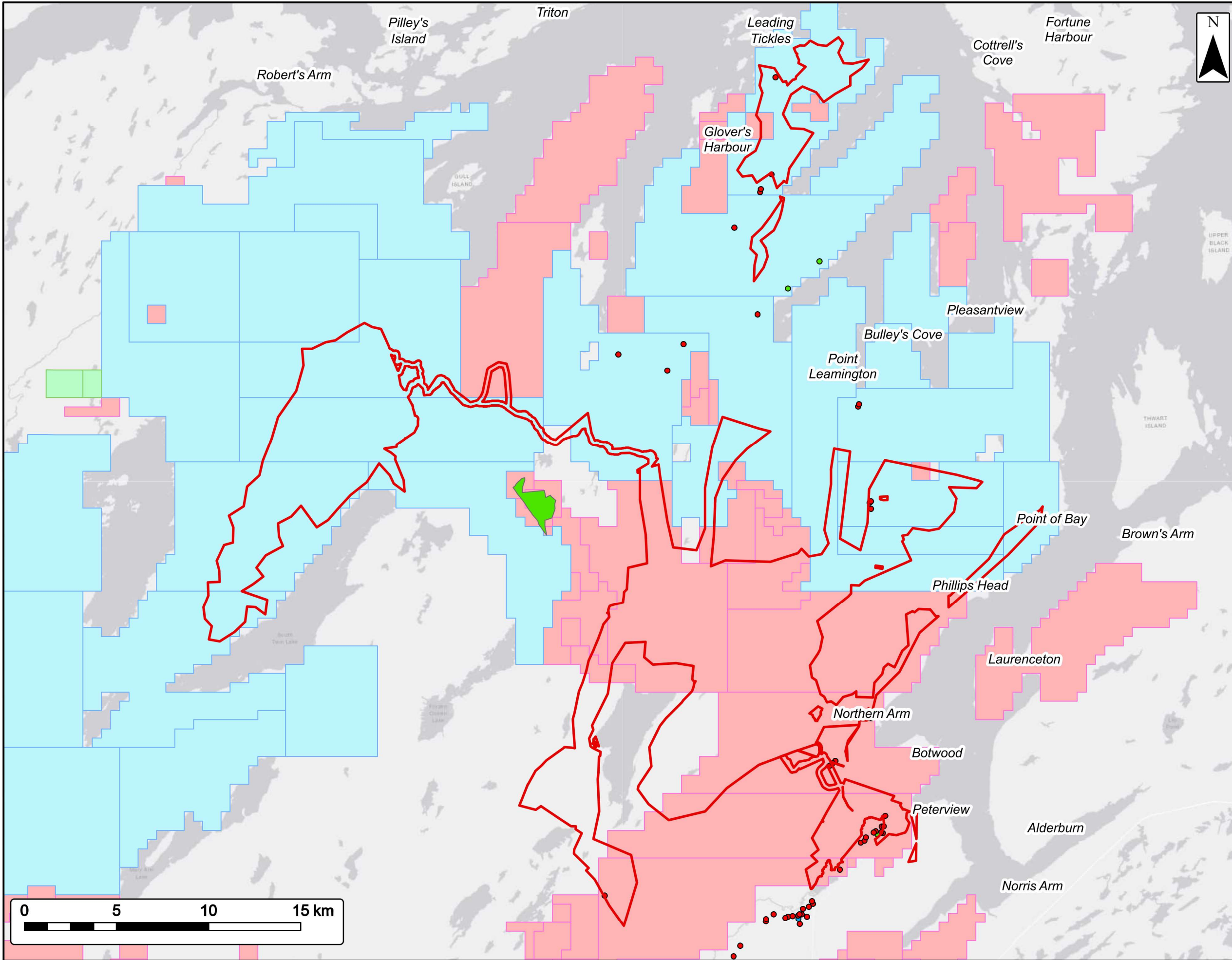


Coordinate System: NAD83 (CSRS) UTM Zone 21N Sources: ESRI Basemaps, GeoNOVA, NSTD, HERE, Garmin, USGS, NRCAN, INFLD Gov. Depts

Date: June 2024	Project #: 24-10265
Scale: 1:200,000	<b>3.21</b>
Drawn By: B. Spencer	
Checked By: N. Thomas	







### Mines and Quarries

Project Area

### EVREC Green Energy Hub

- Quarries - Permits ●
- Quarries - New Applications ●
- Quarries - Leases ●
- Mining Lease ■
- Staked Claim - Grouped ■
- Staked Claim - Issued ■
- Staked Claim - Partially Surrendered ■
- Staked Claim - Recorded ■
- Project Area ■



Coordinate System: NAD83 (CSRS) UTM Zone 21N Sources: ESRI Basemaps, GeoNOVA, NSTD, HERE, Garmin, USGS, NRCan, NFLD Gov. Depts

Date: Sept. 2024	Project #: 24-10265
Scale: 1:200,000	<b>3.22</b>
Drawn By: B. Spencer	
Checked By: N. Thomas	

